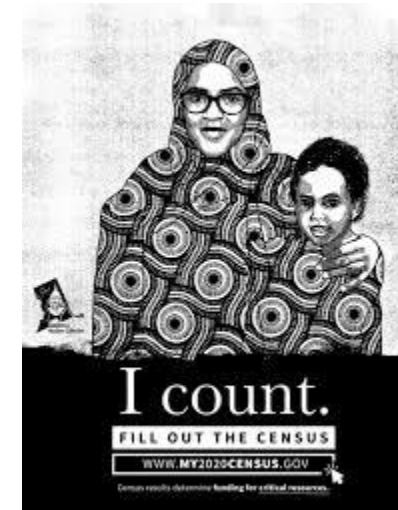


Nancy A. Humphreys Institute for Political Social Work

Our Vision: An inclusive Democracy that works for and responds to all individuals. *Who votes matters.*

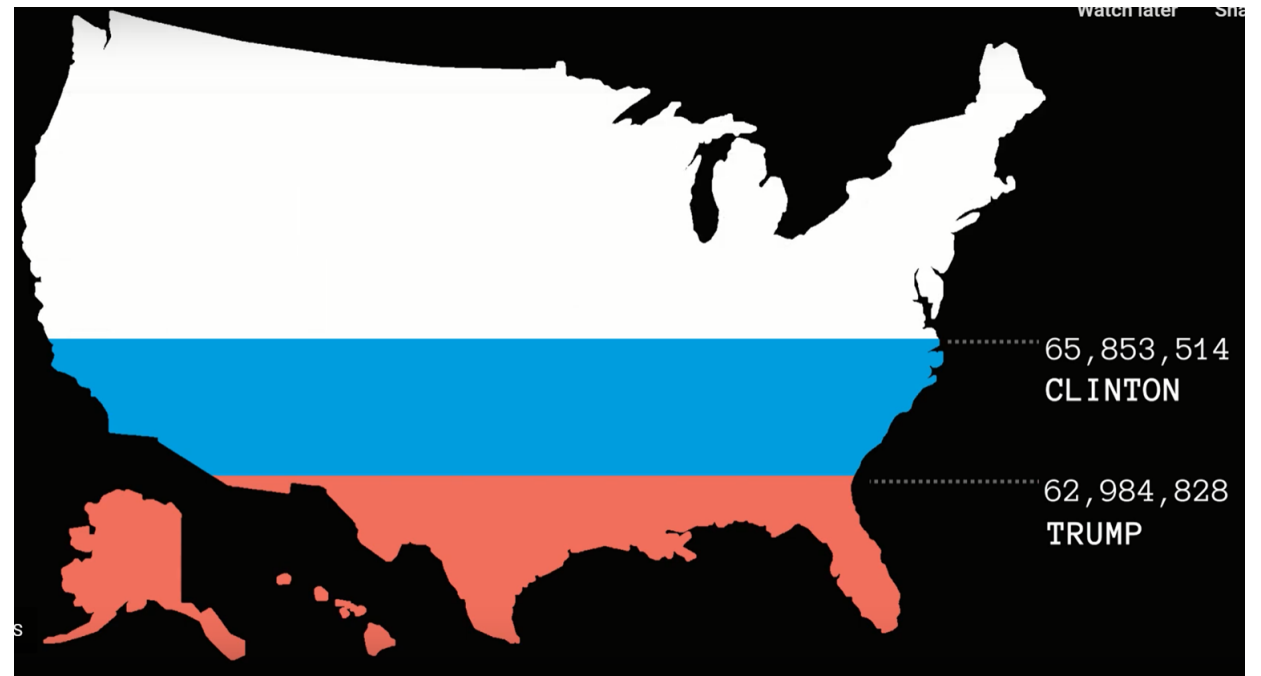
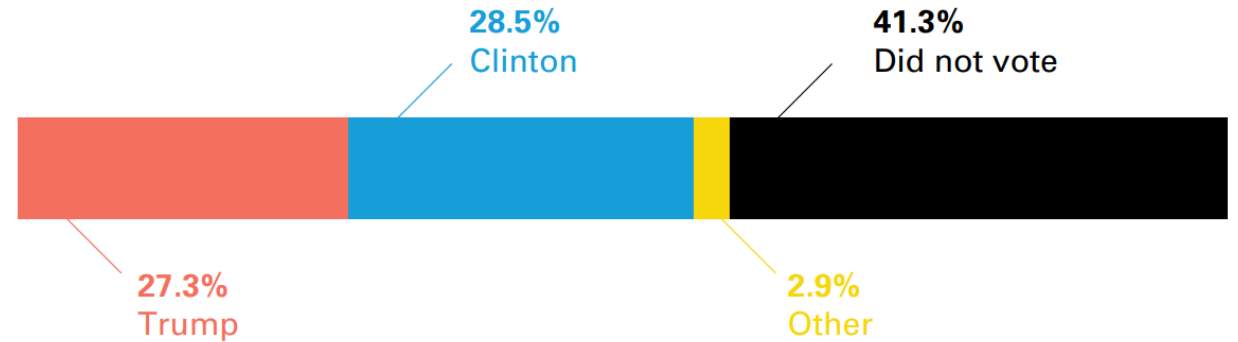


The problem

- 100 million eligible age voters stayed home in 2016; 43% of the eligible electorate
- Turnout for state and local elections is far lower
- Nonvoters are more likely to be lower income, less educated, non-white, and unmarried; often ignored by campaigns

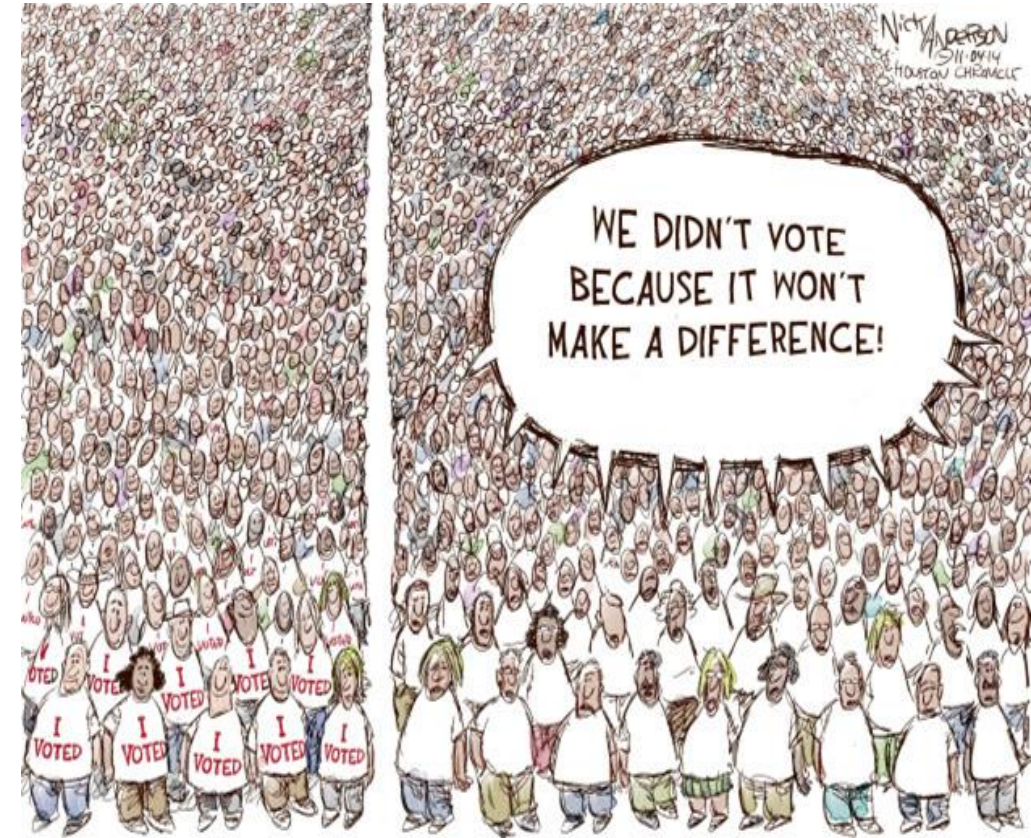
Knight Foundation: <https://the100million.org/>

The United States Election Project: <http://www.electproject.org/>



Structural barriers support the intentional myth that voting doesn't matter

- **Confusing and complicated rules**, deadlines and processes;
- **Suppression tactics include:**
 - felony voting laws
 - strict voter id rules
 - purging voter lists
 - challenging student registrations
 - reducing poll locations
 - strict absentee rules
 - allegations of voter fraud, etc.
 - “Gerrymandering”



Waiting to Vote

Racial Disparities in Election Day Experiences

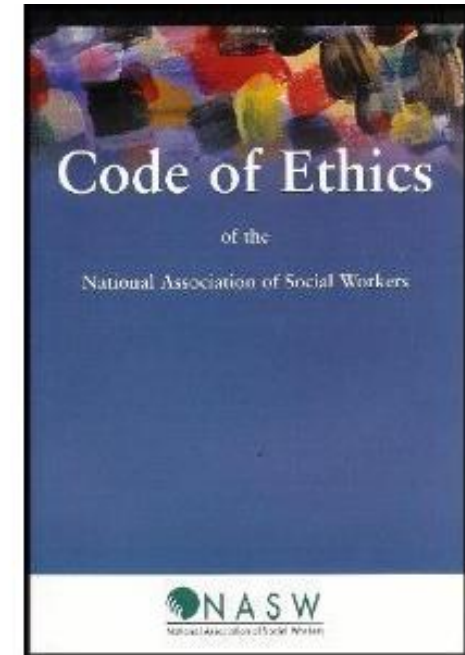
By Hannah Klain, Kevin Morris, Max Feldman, and Rebecca Ayala
With a foreword by Myrna Pérez PUBLISHED JUNE 3, 2020

Brennan Center for Justice at New York University School of Law

“Shoulds” and “how” are important but not enough

Explicit integration of political social work within NASW Code of Ethics:

- “engage in social and political action” to “expand choice and opportunity”
- “promote policies and practices that safeguard the rights of and confirm equity and social justice for all people”



The importance of WHY

- **Social determinant of health.** Individuals and communities who vote are better off.
- **Human right.** Systemic barriers, voter suppression, felony disenfranchisement & gerrymandering designed by and for people in power
- **Empowerment practice.** Voting is an act of power, individually and collectively.
- *“The vote is the most powerful nonviolent tool we have.”*
[John Lewis \(February 21, 1940 - July 17, 2020\)](#)



Ballard, Hoyt & Pachucki, 2018; Center for Information and Research on Civic Learning and Engagement [CIRCLE], 2011; Kansas Health Foundation, Civic Health Index, 2016; Klar & Kasser, 2009; Leighley & Nagler, 2013; Martin, 2003; Martin & Claibourn, 2013; National Conference on Citizenship, Civic Health & Unemployment, 2011; Sanders, 2001.
VotingIsSocialWork.org for citations

Voting as a social work intervention

Micro: Individuals need easy ways to register, information about how/when/where to vote, information on candidates and the encouragement to vote

Mezzo -- community: Voting leads to collective power in communities; relational and social behavior

Macro--fixing the systemic barriers: Voting is different in all 50 states; collective narrative that voting doesn't matter and/or rigged; Advocate for voting rights and access; participate as election officials, poll workers and poll monitors.



Incorporating Voter Engagement into Field Education: Example Practice Activities

The Nine Competencies:

- C1: Demonstrate ethical and professional behavior
- C2: Engage diversity and difference in practice
- C3: Advance human rights and social, economic, and environmental justice
- C4: Engage in practice-informed research and research-informed practice
- C5: Engage in policy practice
- C6: Engage with individuals, families, groups, organizations, and communities
- C7: Assess individuals, families, groups, organizations, and communities
- C8: Intervene with individuals, families, groups, organizations, and communities
- C9: Evaluate practice with individuals, families, groups, organizations, and communities

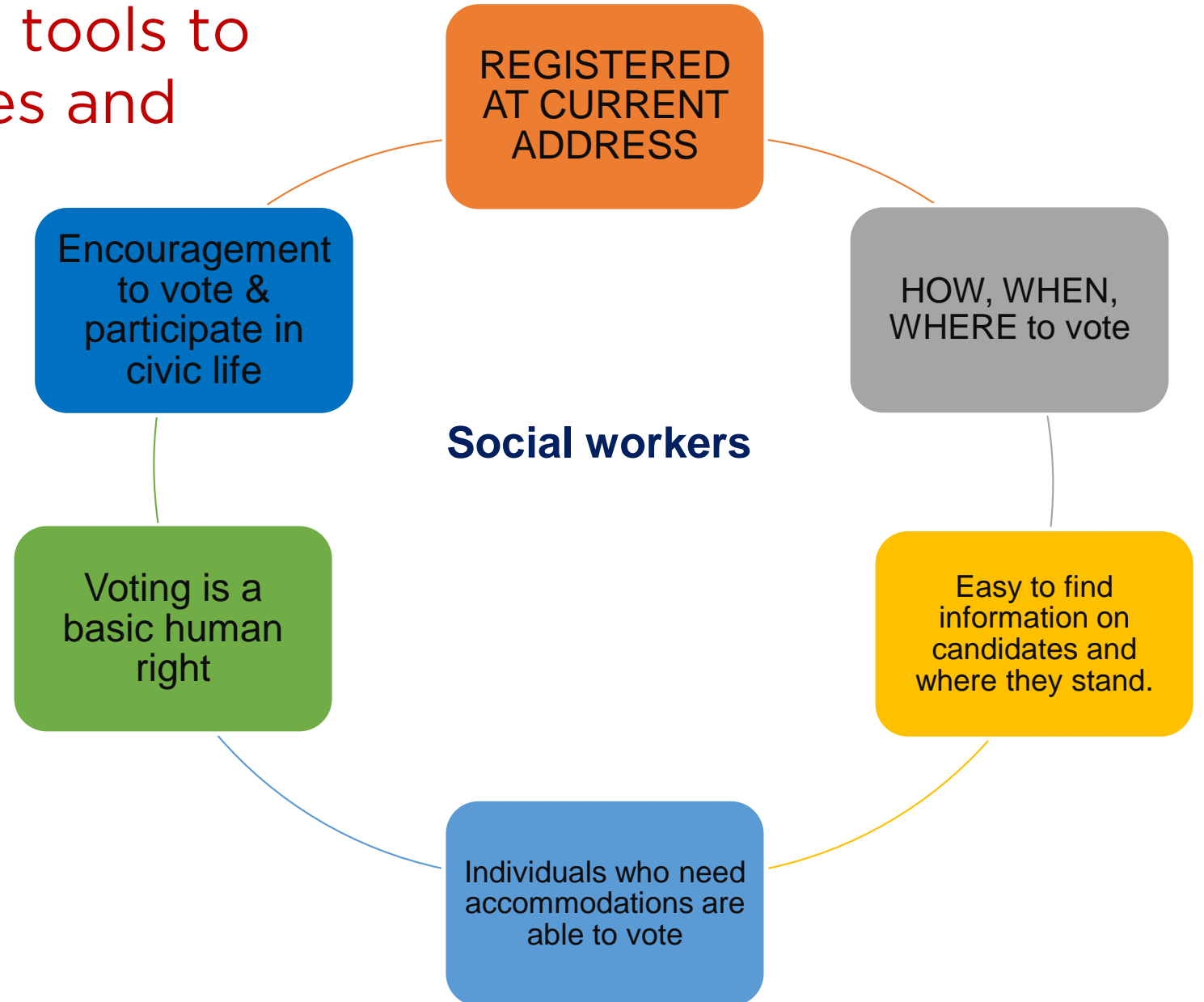
Example Practice Activity	Alignment with core competencies								
	C1	C2	C3	C4	C5	C6	C7	C8	C9
Research allowable nonpartisan voter activities for 501(c)(3) organizations and/or requirements for nonprofits in the 1993 National Voter Registration Act.	✓		✓		✓				
Discuss ethical implications of not supporting clients and communities to vote in social work practice	✓	✓	✓						
Share information on voting and elections with clients, staff and/or communities	✓	✓	✓		✓	✓			
Integrate voter registration into agency services (e.g., add question to intake form)	✓	✓	✓			✓			
Assess the differential impact of voting policies on diverse populations	✓	✓	✓	✓	✓		✓	✓	
Run voter registration drive at agency or event		✓	✓		✓	✓		✓	

Example Practice Activity	Alignment with core competencies								
	C1	C2	C3	C4	C5	C6	C7	C8	C9
Invite elected officials to agency for meetings or forum focused on advancing human rights issues			✓		✓				
Help people with a prior felony conviction to register and vote (if eligible in your state) through public awareness and individual outreach in service delivery		✓	✓		✓	✓	✓	✓	
Implement/change/advocate for voter engagement activity policy in field agency or community			✓		✓				
Promote the importance of Census 2020 in your agency and/or community			✓			✓			
Assess political power of community through voter turnout statistics by district				✓		✓	✓		
Partner with the census task force in your region/town				✓		✓	✓	✓	
Identify elected officials on the local, state, and federal level. Share contact list with agency staff and/or clients	✓		✓		✓				
Train clients/staff on advocacy, government systems, and the importance of voting			✓		✓	✓		✓	
Use supervision to discuss and determine what policies may deter voter turnout			✓		✓	✓	✓		
Use supervision to discuss and determine strategies to engage organizations and communities in voting					✓	✓			
Encourage clients to participate in the census						✓		✓	
Use strategic planning objectives to measure effectiveness of agency voter registration drives					✓				✓
Identify measureable outcomes of voter pledge card drives (e.g. compare against public records)					✓				✓

Voting activities connect to all 9 CSWE core competencies and connect micro and macro practice

Giving social workers the tools to support clients, colleagues and communities to vote

- Health care settings
- Schools (and parents)
- Clinics
- Shelters
- Libraries
- After school programs
- Day care
- Food pantries
- VAs



Simple tools in one place.

VotingIsSocialWork.org



Nancy A. Humphreys Institute for Political Social Work



The National Social Work Voter Mobilization Campaign

Our Vision

Social justice is a core principle of social work practice and calls for ensuring meaningful participation in decision making for all people. Voting is Social Work is a nonprofit nonpartisan organization that provides social work students and practitioners with the knowledge and tools to raise awareness about voting and to increase voting registration and participation. We do this work through our National Social Work Voter Mobilization Campaign which strives to integrate nonpartisan voter registration and engagement into social work education and practice.

Check your Voter
Registration!



Register to Vote!



Register Special
Populations



Order your Absentee
Ballot



State Specific
Resources

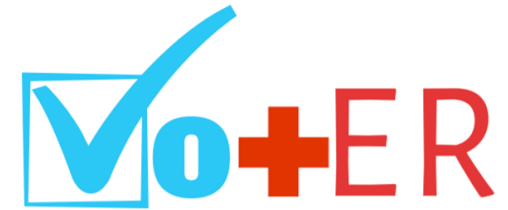
Social Work & Voter

Volunteer & Join!

More ways to get
involved!



www.VotingIsSocialWork.org



For voting resources and information: go to
www.VotingIsSocialWork.org

Tanya Rhodes Smith
Cindy Dubuque-Gallo

Nancy A Humphreys Institute for Political Social Work
University of Connecticut School of Social Work

Tanya.smith@uconn.edu
Cindy.Dubuque-Gallo@uconn.edu